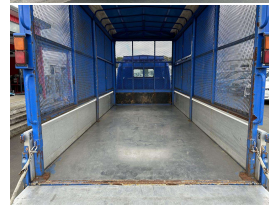


2011 Mitsubishi Canter



VEHICLE INFORMATION

Cash Price

Includes GST,
Registration &
Licensing

\$32,764

Finance may be
available on this
vehicle.
Ask one of our
friendly staff for
more information.



Gain peace of mind
with Mechanical
Breakdown Insurance.
Ask us how.

Body
Truck - Flat Deck

Odometer
113,000 km

Engine
3000 cc

Fuel Type
Diesel

Transmission
MT5

Wheels
-

VIN
FEA20-500273 - 44

Reg No.
-

Ext Colour
SPECIFIEDTYPE

History
-

Seats
-

Interior
-

Audio
-

Stock ID
24607

STOCK NO 24607

MODEL - FEA20
ENGINE - 4P10 - 3.0 DIESEL TURBO
TRANS - 5 SPEED MANUAL
LICENSE - CAR
DRIVERS AIRBAG AND ABS
RADIO
DROPSIDE FLATDECK
INNER DECK DIMENSIONS 4350 X 1785 X 2065H

WEIGHTS - TARE 3000KG - GVM 4960KG - PAYLOAD 1960KG

PRICE \$28490 + GST - \$32764.00 incl

>>>NOTE - VIEWING BY APPOINTMENT ONLY >>>

Thankyou for visiting our webpage - a brief description on what we can offer at Counties Commercial Centre

Mechanical workshop for repairs and maintenance
Engineering and fabrication, work carried out to LT400 certification
Towbars - Load anchorages - Taillifts - truck modifications
Panel shop with a state of the art Truck paint booth

Competitive Finance through UDC
Range of Mechanical breakdown Insurance Policies



Counties Commercial Centre, Phone 09 2393340, Email vince@countiescommercial.co.nz
91 Adams Drive, Pukekohe, Auckland 2120, New Zealand