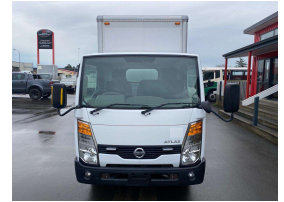


2011 Nissan Atlas



VEHICLE INFORMATION

Cash Price

Includes GST,
Registration &
Licensing

\$25,289

Finance may be available on this vehicle. Ask one of our friendly staff for more information.



Gain peace of mind with Mechanical Breakdown Insurance. Ask us how.

Body
Truck - Box Body

Odometer
54,000 km

Engine
1990 cc

Fuel Type
Petrol

Transmission
FAT

Wheels
-

VIN
SQ2F24-015676 - 46

Reg No.
-

Ext Colour
White

History
-

Seats
-

Interior
-

Audio
-

Stock ID
24536

STOCK NO 24536

MODEL - DSQ2F24

ENGINE - QR20 - 2.0 PETROL

TRANSMISSION - AUTOMATIC

CAR LICENSE

SEATS 3

DRIVERS AIRBAG AND ABS

REVERSE CAMERA

RADIO

INNER BOX DIMENSIONS 3095 X 1645 X 1995H ## 10m3

WEIGHTS - TARE 2130KG - GVM 3595KG - PAYLOAD 1465KG

PRICE \$21990 + GST

>>>NOTE - VIEWING BY APPOINTMENT ONLY >>>

Thankyou for visiting our webpage - a brief description on what we can offer at Counties Commercial Centre

Mechanical workshop for repairs and maintenance
Engineering and fabrication, work carried out to LT400 certification
Towbars - Load anchorages - Taillifts - truck modifications
Panel shop with a state of the art Truck paint booth

Competitive Finance through UDC



Counties Commercial Centre, Phone 09 2393340, Email vince@countiescommercial.co.nz
91 Adams Drive, Pukekohe, Auckland 2120, New Zealand