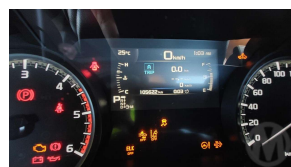
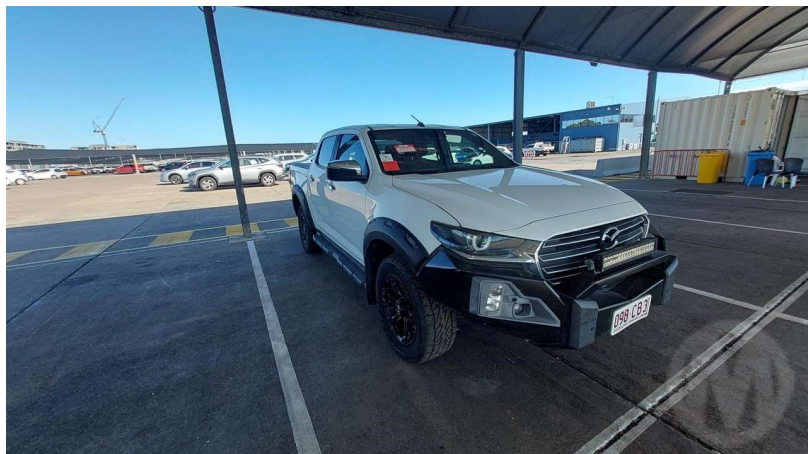


2021 Mazda BT-50 B30B GT Thunder 4WD/D/6AT



VEHICLE INFORMATION

Cash Price

Includes GST,
Registration &
Licensing

\$

Finance may be
available on this
vehicle.
Ask one of our
friendly staff for
more information.



Gain peace of mind
with Mechanical
Breakdown Insurance.
Ask us how.

| | |
|-------------------|------------|
| Body | Reg No. |
| Ute | - |
| Odometer | Ext Colour |
| 105,622 km | - |
| Engine | History |
| 2999 cc | - |
| Fuel Type | Seats |
| Diesel | - |
| Transmission | Interior |
| Auto | - |
| Wheels | Audio |
| - | - |
| VIN | Stock ID |
| MP2TFS40JNT014348 | 24801 |

THUNDER EDITION

3.0 4 cylinder turbo diesel producing 140kW/450Nm couple to a 6 speed automatic transmission
Premium steel bullbar
3500kg braked towing capacity
4x4 with low range

Thunder Variant Exclusive Features

Front Protection: Polished steel bull bar with integrated LED light bar

Storage - Electric tonneau cover and tub liner

Styling: 18-inch black alloy wheels, fender flares, and black side steps

Exterior: Black steel sports

Key Dimensions and Capacities

Length: 5,470 mm
Width: 1,870 mm (excluding mirrors)
Height: 1,790 mm
Ground Clearance: 240 mm
Payload: Approx. 897 kg
Braked Towing: 3,500 kg
Fuel Tank: 76 L

Interior and Safety

Seats - Brown leather upholstery with heated front seats
Infotainment: 9.0-inch touchscreen, satellite navigation, wireless Apple CarPlay, and wired Android Auto



Counties Commercial Centre, Phone 0272380398, Email vince@countiescommercial.co.nz
91 Adams Drive, Pukekohe, Auckland 2120, New Zealand