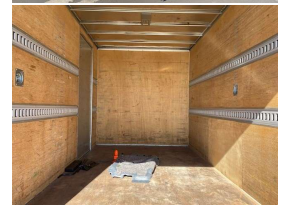


2015 Nissan Atlas 20.5m³ taillift



VEHICLE INFORMATION

Cash Price

Includes GST,
Registration &
Licensing

\$37,990

Finance may be
available on this
vehicle.
Ask one of our
friendly staff for
more information.



Gain peace of mind
with Mechanical
Breakdown Insurance.
Ask us how.

Body

Truck - Box Body

Odometer

170,000 km

Engine

2990 cc, Diesel

Fuel Type

Diesel

Transmission

Automatic

Wheels

-

VIN

7AT0DH1GX22537135

Reg No.

PAM817

Ext Colour

White

History

Ex-Overseas

Seats

3 seats

Interior

-

Audio

-

Stock ID

24737

STOCK NO 24737

MODEL - FEB5W - WIDE CAB

ENGINE - 4P10 - 3.0 DIESEL TURBO

TRANSMISSION - AUTOMATIC

LICENSE - CAR

600KG TAILLIFT

DRIVERS AIRBAG AND ABS

REVERSE CAMERA

2 X REAR BARN DOORS AND 1 X SIDE SLIDER

INNER BOX DIMENSIONS 4520 X 2085 X 2175 ## 20.5m³

WEIGHTS - TARE 3450KG - GVM 5615KG - PAYLOAD 2165KG

PRICE \$37990 incl GST - SPECIAL

Thankyou for visiting our web page - a brief description on what we
can offer at COUNTIES COMMERCIAL CENTRE

FULL MECHANICAL FACILITIES IN OUR WORKSHOP ## SERVICE
PLANS ##

FULL FABRICATION IN OUR ENGINEERING WORKSHOP, WE
COVER TOWBAR'S, TAIL LIFTS, LOAD ANCHORAGE POINTS AND
RAILS, ALL WORK COMPLETED TO LT400 CERTIFICATION ##

WE HAVE A STAFF OF 9 IN OUR PAINT AND PANEL SHOP AND
HAVE A 16mtr PAINT BOOTH TO ACCOMMODATE THE LARGEST FLEET
OF TRUCKS - WE CAN ASSIST IN REPAIRS TO FLEET COLOURS ##

FINANCE FROM 7.95% TAP -



Counties Commercial Centre, Phone 09 2393340, Email vince@countiescommercial.co.nz
91 Adams Drive, Pukekohe, Auckland 2120, New Zealand